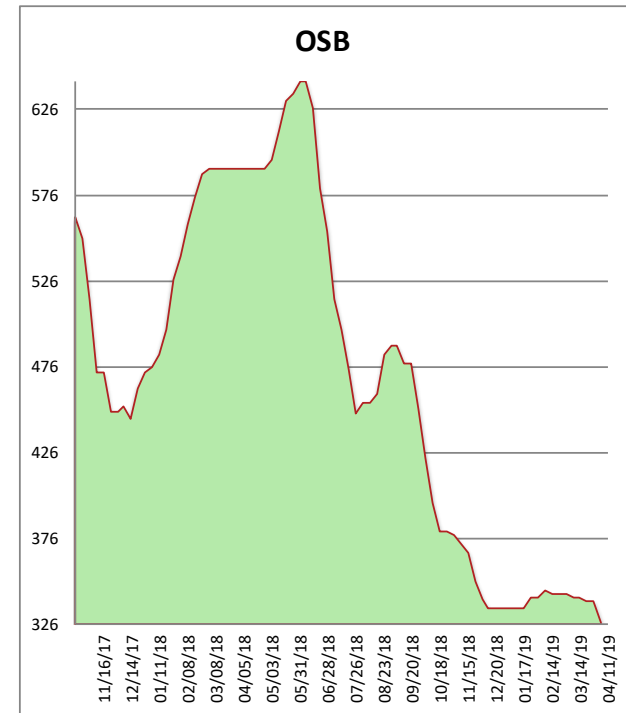
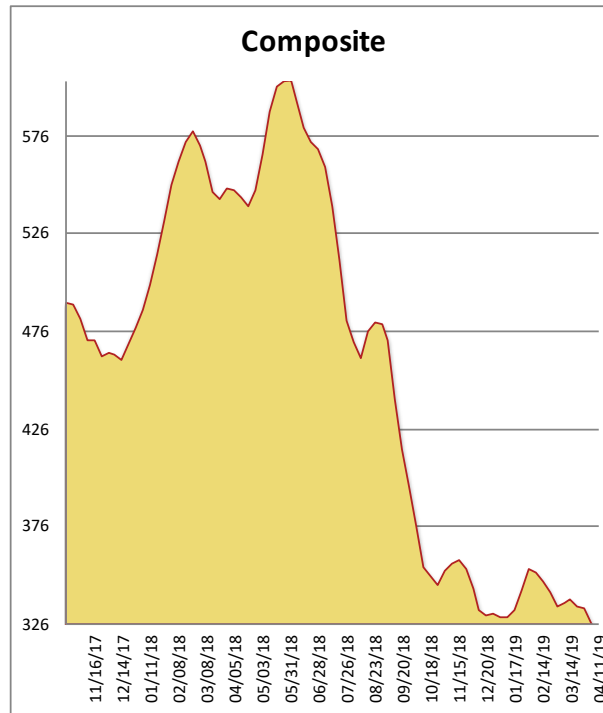


All items are priced as a general market guide. Please call our sales office for specific quotes in your respective market.

	This Week	Weekly Change	Last Year
2x4 2/BTR DF S-GRN	322	-5	554
2x6 2/BTR DF S-GRN	362	-10	538
2x10 2/BTR DF S-GRN	324	5	503
4x12 2/BTR DF S4S	330	-10	700
2x4 921/4 2/BTR DF S-GRN	304	0	407
2x4 1041/4 2/BTR DF S-GRN	308	-10	534
2x4 2/BTR SPF KD	332	-14	524
4X8 15/32 OSB	234	-10	487
4X8 23/32 OSB T&G	419	-16	696
Composite Average	326	-08	549

Prices are F.O.B. mill, excluding freight



Cracks widened almost across the board (pun intended) as the spring market rally that many have anticipated failed once again to appear. Punxsutawney Phil (Mickelson) did not see his shadow in Augusta this week, which means market price gains are eminent. Seriously, the levels that wood products are currently trading at are at a significant discount to those of a year ago. Now is a good time to lock in your lumber and panel needs for summer.