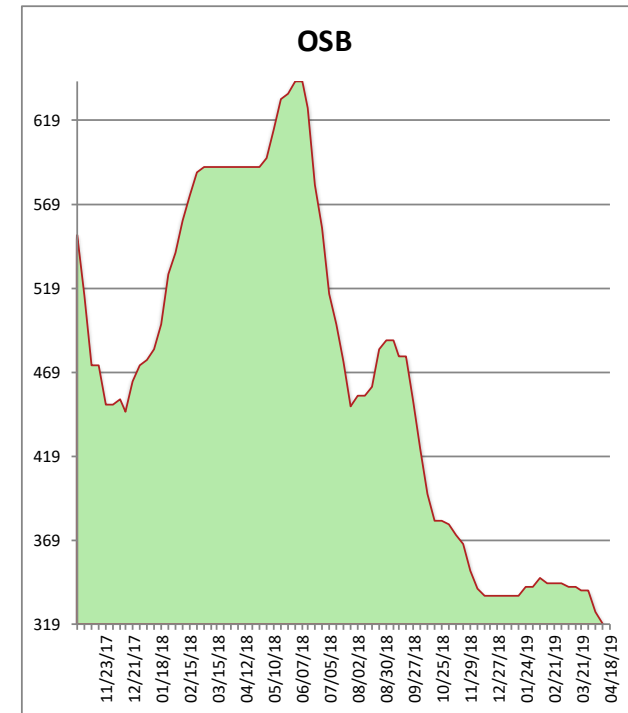
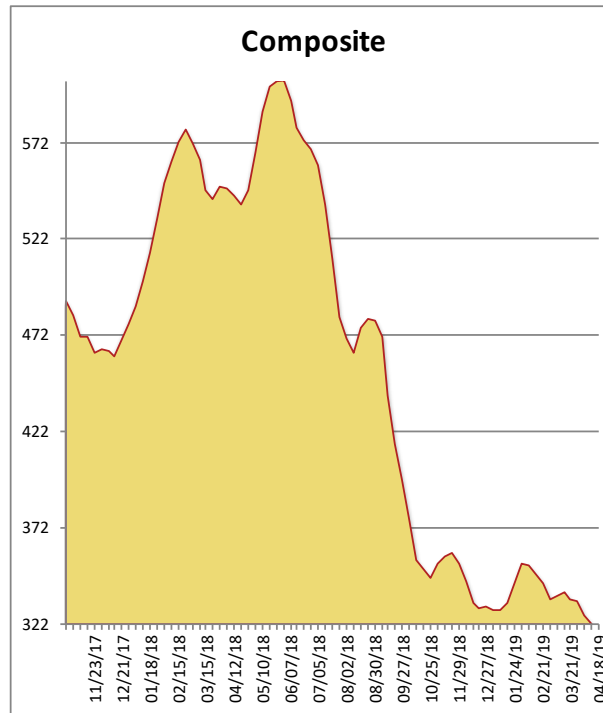


All items are priced as a general market guide. Please call our sales office for specific quotes in your respective market.

|                           | This Week | Weekly Change | Last Year |
|---------------------------|-----------|---------------|-----------|
| 2x4 2/BTR DF S-GRN        | 317       | -5            | 554       |
| 2x6 2/BTR DF S-GRN        | 357       | -5            | 538       |
| 2x10 2/BTR DF S-GRN       | 334       | 10            | 493       |
| 4x12 2/BTR DF S4S         | 330       | 0             | 690       |
| 2x4 921/4 2/BTR DF S-GRN  | 301       | -3            | 404       |
| 2x4 1041/4 2/BTR DF S-GRN | 304       | -4            | 526       |
| 2x4 2/BTR SPF KD          | 317       | -15           | 548       |
| 4X8 15/32 OSB             | 229       | -5            | 487       |
| 4X8 23/32 OSB T&G         | 409       | -10           | 696       |
| Composite Average         | 322       | -04           | 548       |

Prices are F.O.B. mill, excluding freight



Another week of soft market pricing saw more price decreases in lumber and panels. Improved weather has failed to create much market activity, and it's obvious now that we are in a supply driven market. Look for mills to curtail before we see much significant change in the tone.

Congrats to Tiger Woods for an amazing comeback at the Masters!