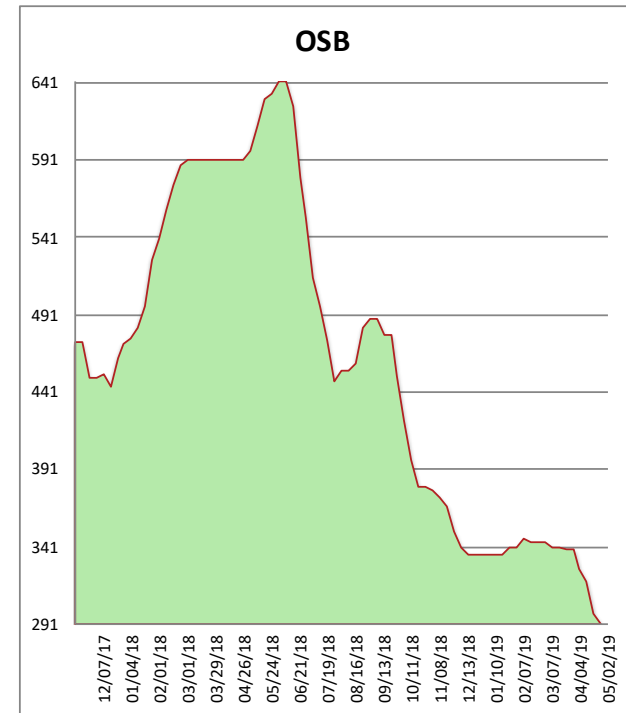
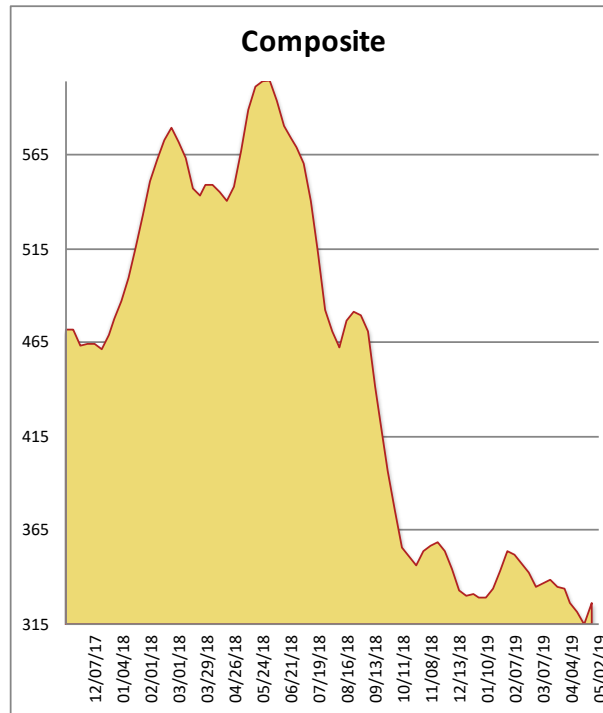


All items are priced as a general market guide. Please call our sales office for specific quotes in your respective market.

	This Week	Weekly Change	Last Year
2x4 2/BTR DF S-GRN	332	20	542
2x6 2/BTR DF S-GRN	362	10	508
2x10 2/BTR DF S-GRN	362	18	471
4x12 2/BTR DF S4S	330	0	680
2x4 921/4 2/BTR DF S-GRN	314	13	388
2x4 1041/4 2/BTR DF S-GRN	326	19	528
2x4 2/BTR SPF KD	332	36	564
4X8 15/32 OSB	204	-5	487
4X8 23/32 OSB T&G	378	-8	696
Composite Average	327	11	540

Prices are F.O.B. mill, excluding freight



Another week, another mill curtailment to try to get lumber supply in line with less than stellar demand. Again it's a Canadian producer, and we will see if the cumulative effect has much impact. Last week saw secondaries buy in heavier than they have in months, mainly the office wholesalers. This week the mills raised prices, but found themselves selling against their own wood. Pretty much the same story with OSB - too much for too few.