



1-800-231-2310

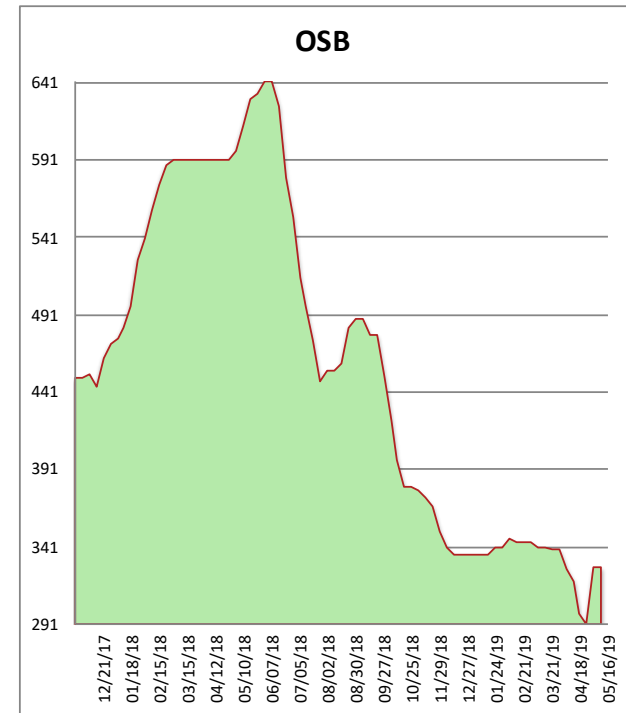
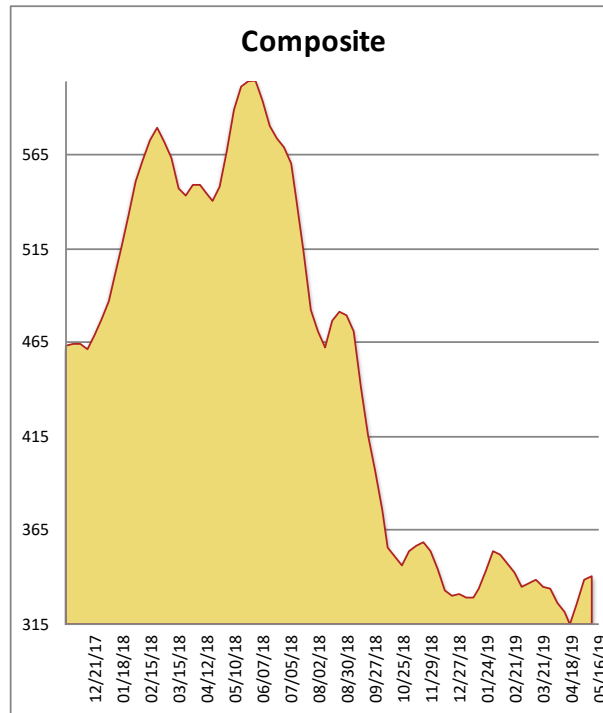
# California Framing Lumber Brief

05/16/19

All items are priced as a general market guide. Please call our sales office for specific quotes in your respective market.

	This Week	Weekly Change	Last Year
2x4 2/BTR DF S-GRN	338	0	574
2x6 2/BTR DF S-GRN	366	0	536
2x10 2/BTR DF S-GRN	376	10	508
4x12 2/BTR DF S4S	340	10	670
2x4 921/4 2/BTR DF S-GRN	324	0	404
2x4 1041/4 2/BTR DF S-GRN	338	0	592
2x4 2/BTR SPF KD	326	-6	624
4X8 15/32 OSB	234	0	487
4X8 23/32 OSB T&G	422	0	706
Composite Average	340	02	567

Prices are F.O.B. mill, excluding freight



After a couple of weeks of price increases, OSB manufacturers saw a more muted tone this week. Lumber markets continue to be lethargic. SYP in particular is suffering from a lack of pull through as weather in South Texas has mucked things up. SPF is lackluster even after a number of supply curtailments have been announced by the Canadian mills. We are getting closer to a much needed three-day weekend, so think ahead for your needs!