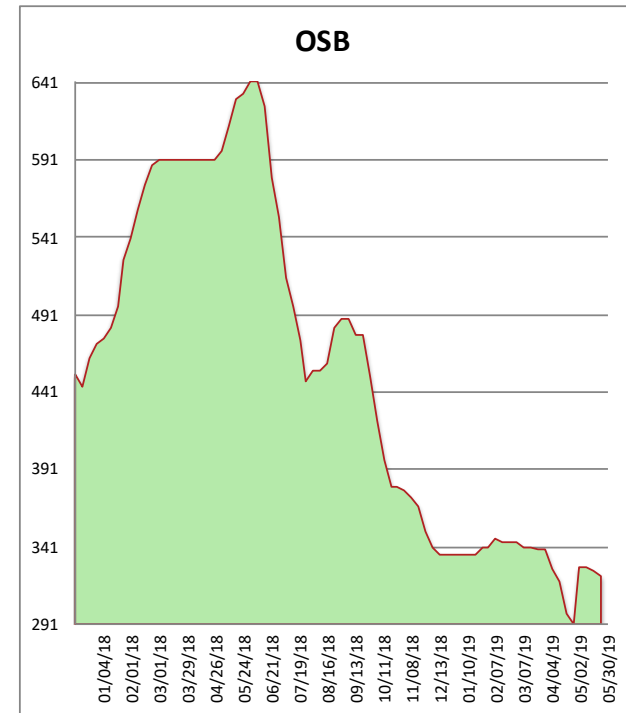
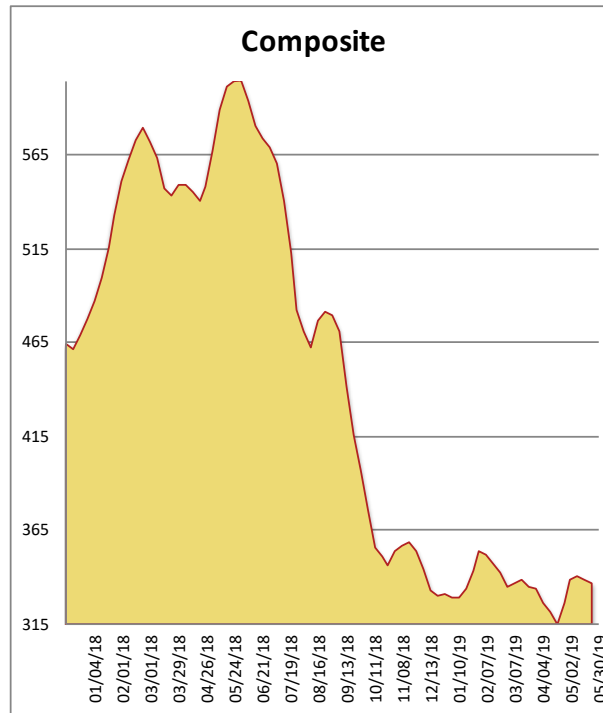


All items are priced as a general market guide. Please call our sales office for specific quotes in your respective market.

	This Week	Weekly Change	Last Year
2x4 2/BTR DF S-GRN	330	-5	616
2x6 2/BTR DF S-GRN	340	-20	572
2x10 2/BTR DF S-GRN	371	-5	563
4x12 2/BTR DF S4S	400	40	675
2x4 921/4 2/BTR DF S-GRN	315	-5	434
2x4 1041/4 2/BTR DF S-GRN	325	-8	628
2x4 2/BTR SPF KD	305	-5	662
4X8 15/32 OSB	230	0	518
4X8 23/32 OSB T&G	415	-5	744
Composite Average	337	-01	601

Prices are F.O.B. mill, excluding freight



A holiday shortened week and another week of bad weather across much of the viewing area had no motivating effect on the still over supplied market. Activity levels are low and most buyers sat on the sidelines. SYP is absolutely in the tank with no foresight of change. DF and Spruce prices have continued to drift. The fire that was threatening an OSB mill in Alberta has changed direction and is no longer a threat, and has left prices flat in the West and soft elsewhere. Get ready..we are going to go straight from a rainy spring to a 100 degree summer!