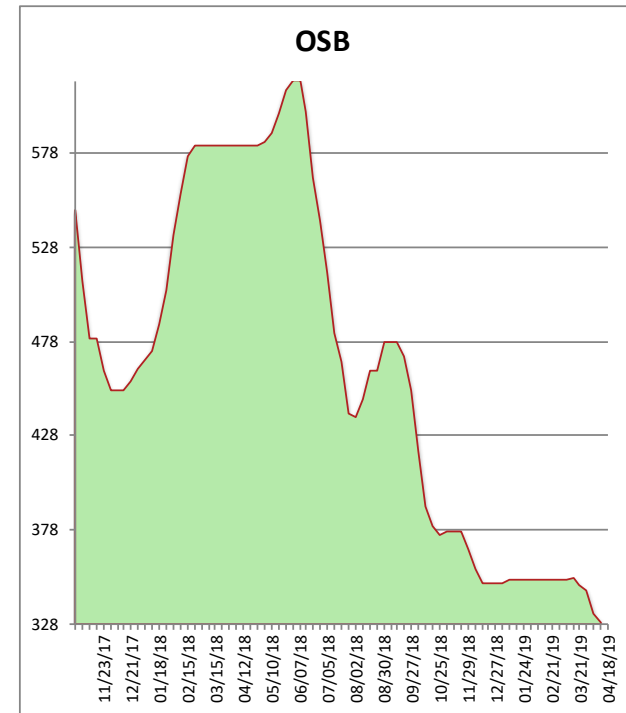
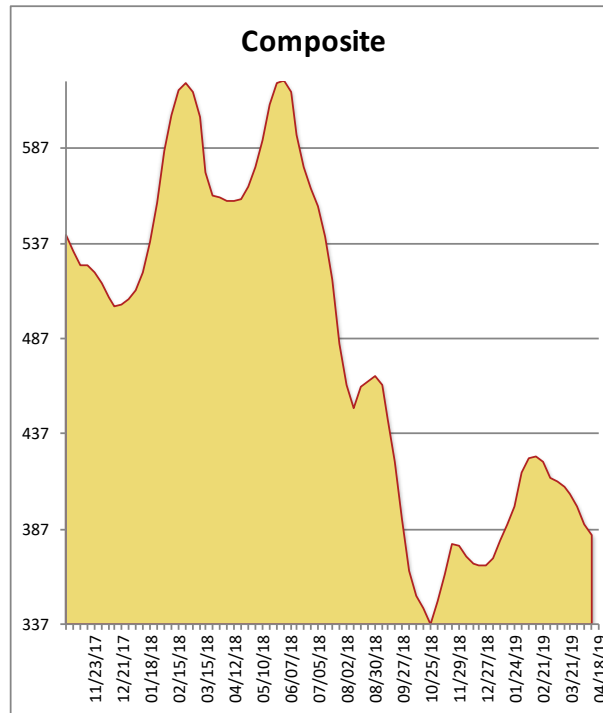


All items are priced as a general market guide. Please call our sales office for specific quotes in your respective market.

	This Week	Weekly Change	Last Year
2X4 STD/BTR DF/L KD	400	-5	597
2X6 2/BTR DF/L KD	415	-10	595
2X10 2/BTR DF/L KD	410	-5	545
2X12 2/BTR DF/L KD	480	-10	608
2X4 92-5/8 DF/L KD	320	0	426
2X4 104-5/8 DF/L KD	360	-5	525
2X6 104-5/8 DF/L KD	410	-10	576
4X8 7/16 OSB	212	-5	473
4X8 23/32 OSB T&G	445	-5	690
Composite Average	384	-06	559

Prices are F.O.B. mill, excluding freight



Another week of soft market pricing saw more price decreases in lumber and panels. Improved weather has failed to create much market activity, and it's obvious now that we are in a supply driven market. Look for mills to curtail before we see much significant change in the tone.

Congrats to Tiger Woods for an amazing comeback at the Masters!