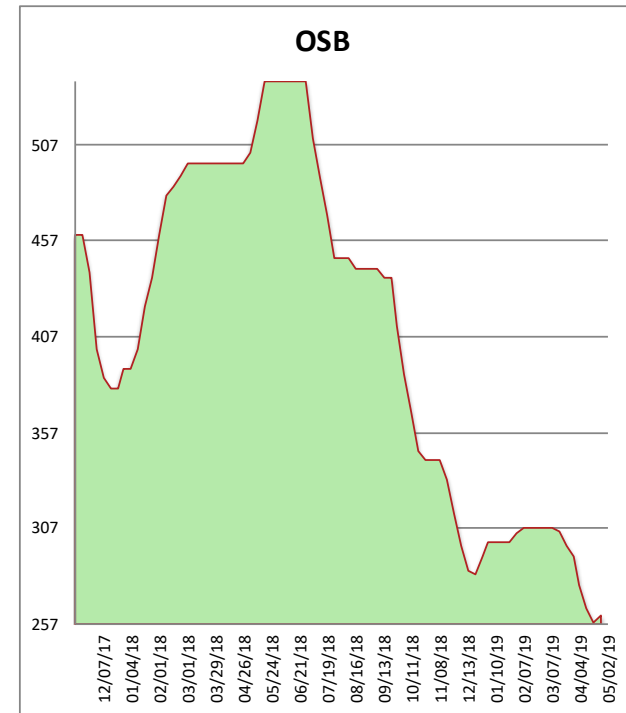
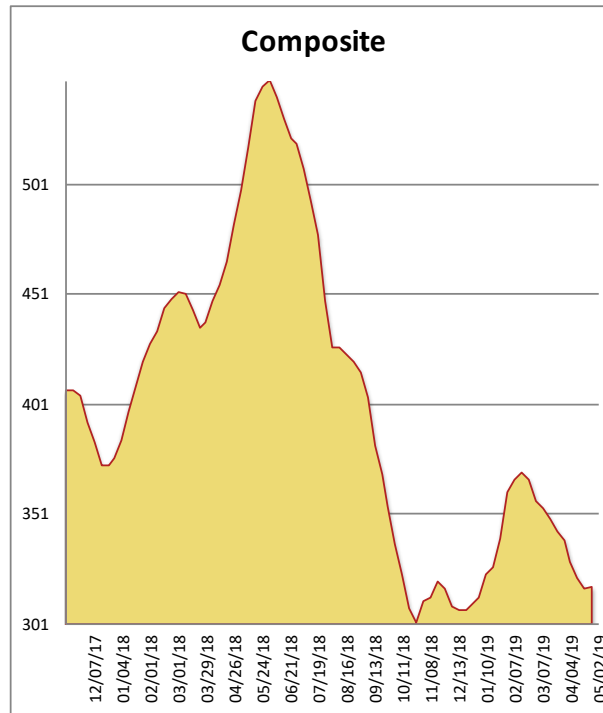


All items are priced as a general market guide. Please call our sales office for specific quotes in your respective market.

	This Week	Weekly Change	Last Year
2X4 UTILITY SPF KD	280	5	420
2X6 2/BTR SYP KD	315	-15	460
2X10 SYP KD	305	0	375
2X12 SYP KD	545	0	500
2X4 92-5/8 STUD SPF KD	265	0	400
2X4 104-5/8 STUD SPF KD	305	5	505
2X6 104-5/8 STUD SPF KD	325	3	535
4X8 7/16 OSB	184	4	405
4X8 23/32 OSB T&G	339	4	590
Composite Average	318	01	466

Prices are F.O.B. mill, excluding freight



Another week, another mill curtailment to try to get lumber supply in line with less than stellar demand. Again it's a Canadian producer, and we will see if the cumulative effect has much impact. Last week saw secondaries buy in heavier than they have in months, mainly the office wholesalers. This week the mills raised prices, but found themselves selling against their own wood. Pretty much the same story with OSB - too much for too few.