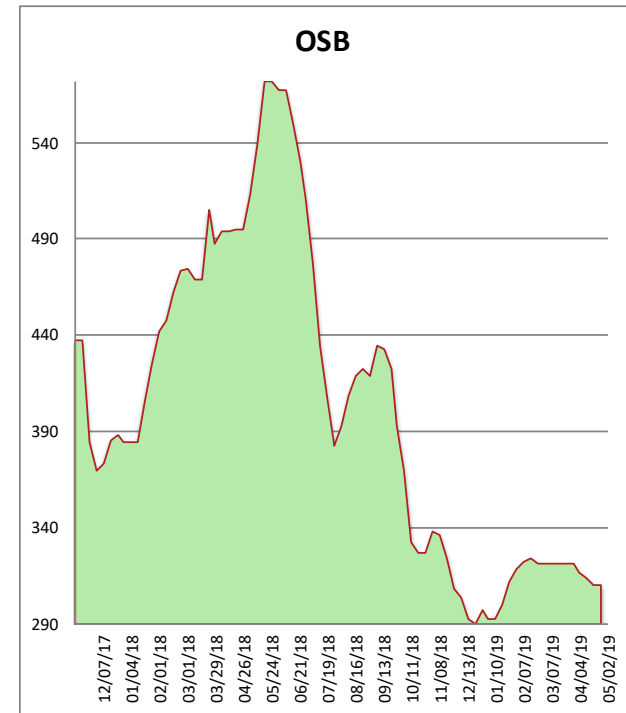
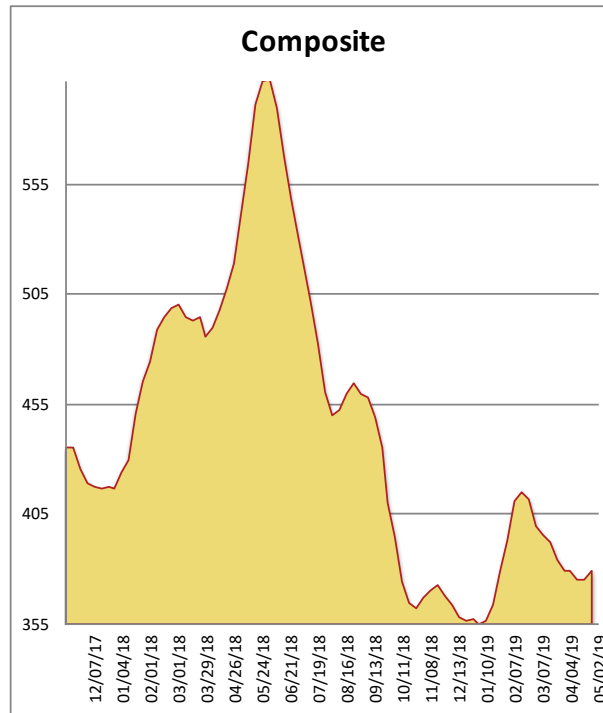


All items are priced as a general market guide. Please call our sales office for specific quotes in your respective market.

	This Week	Weekly Change	Last Year
2X4 2/BTR SYP KD	414	-1	585
2X6 2/BTR SYP KD	307	-5	437
2X8 2/BTR SYP KD	332	2	415
2X10 2/BTR SYP KD	360	0	400
2X12 2/BTR SYP KD	530	0	510
2X4 104-5/8 #2/BTR SPF	412	9	578
2X6 104-5/8 #2/BTR SPF	437	32	656
4X8 7/16 OSB	196	1	390
4X8 23/32 OSB T&G	425	0	600
Composite Average	379	04	508

Prices are F.O.B. mill, excluding freight



Another week, another mill curtailment to try to get lumber supply in line with less than stellar demand. Again it's a Canadian producer, and we will see if the cumulative effect has much impact. Last week saw secondaries buy in heavier than they have in months, mainly the office wholesalers. This week the mills raised prices, but found themselves selling against their own wood. Pretty much the same story with OSB - too much for too few.