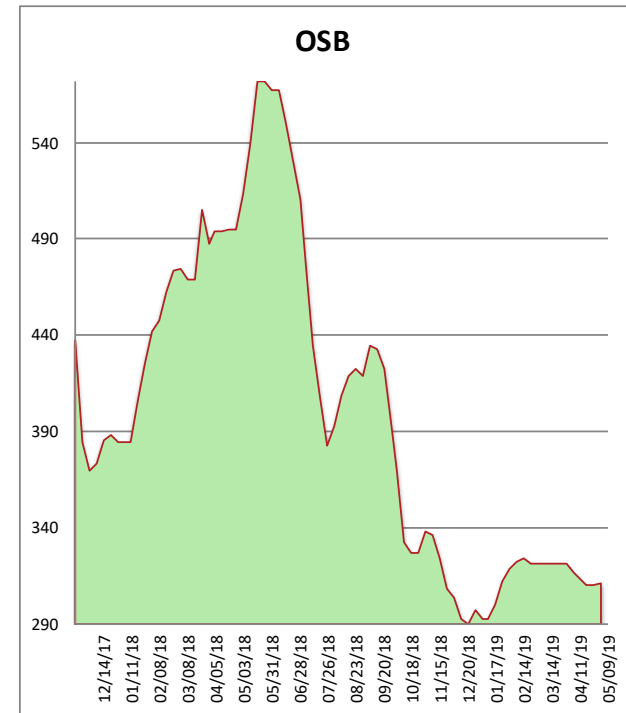
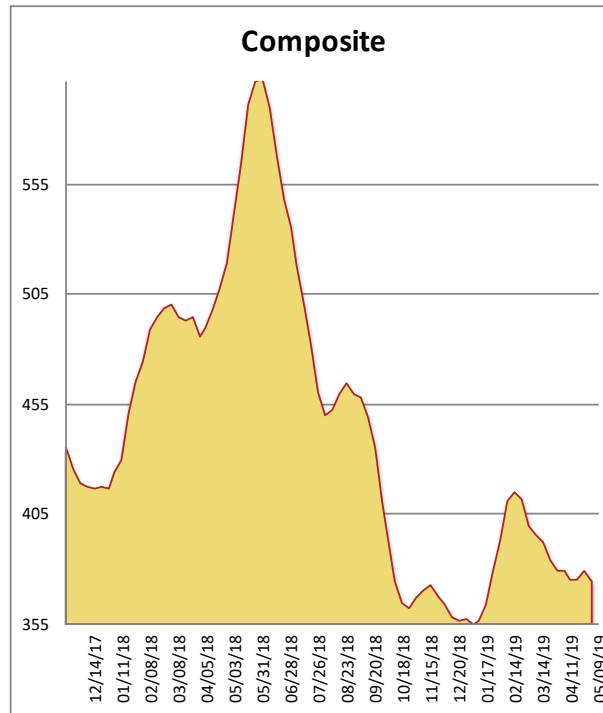


All items are priced as a general market guide. Please call our sales office for specific quotes in your respective market.

	This Week	Weekly Change	Last Year
2X4 2/BTR SYP KD	409	-5	594
2X6 2/BTR SYP KD	296	-11	460
2X8 2/BTR SYP KD	328	-4	428
2X10 2/BTR SYP KD	360	0	420
2X12 2/BTR SYP KD	522	-8	517
2X4 104-5/8 #2/BTR SPF	405	-7	595
2X6 104-5/8 #2/BTR SPF	425	-12	668
4X8 7/16 OSB	197	1	390
4X8 23/32 OSB T&G	425	0	600
Composite Average	374	-05	519

Prices are F.O.B. mill, excluding freight



Lumber markets were a mixed bag this week. While SYP dimension remains weak with wet weather impacting Texas, other species firmed up. Talk of more mill curtailments were common from both mill and secondary traders. OSB saw upward price movement last week in western markets in particular, and the momentum, while largely secondary driven, continued this week as prices rose again. Watching closely this weekend to see whether the Nuggets or the Blazers earn the honor of sacrificial lamb for Golden State starting next week.