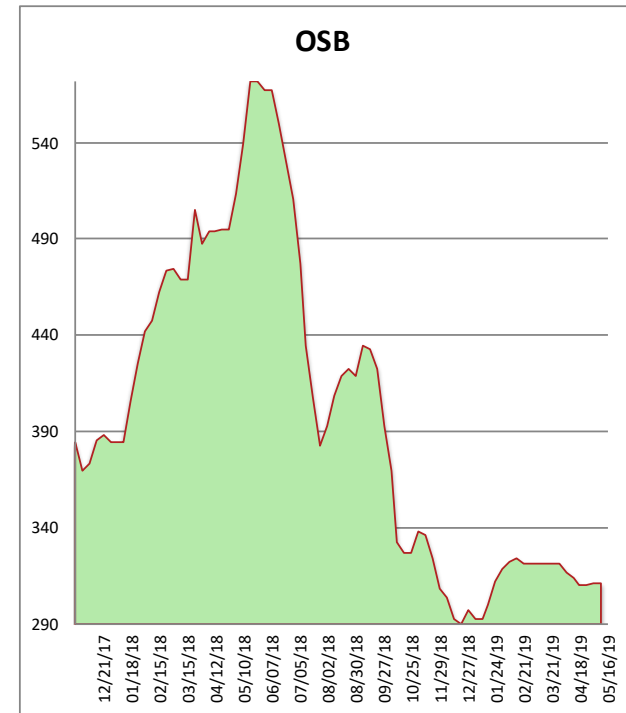
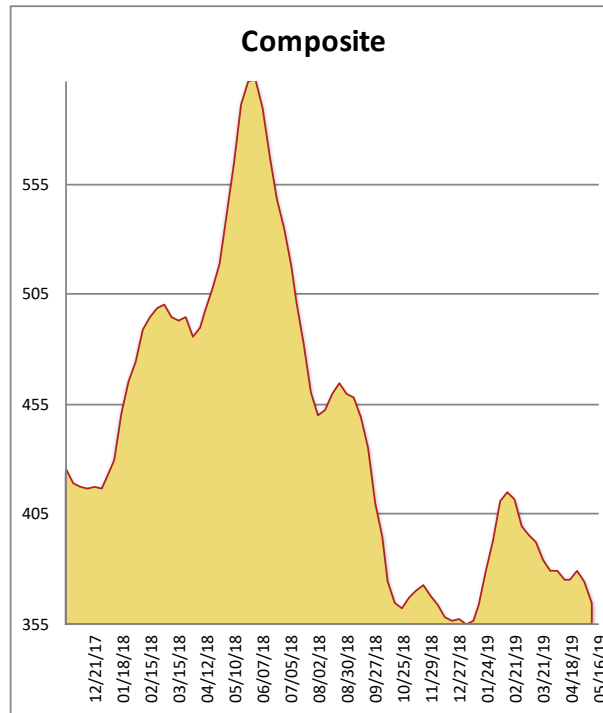


All items are priced as a general market guide. Please call our sales office for specific quotes in your respective market.

	This Week	Weekly Change	Last Year
2X4 2/BTR SYP KD	394	-15	605
2X6 2/BTR SYP KD	285	-11	490
2X8 2/BTR SYP KD	313	-15	458
2X10 2/BTR SYP KD	345	-15	455
2X12 2/BTR SYP KD	516	-6	540
2X4 104-5/8 #2/BTR SPF	398	-7	630
2X6 104-5/8 #2/BTR SPF	412	-13	672
4X8 7/16 OSB	197	0	405
4X8 23/32 OSB T&G	425	0	622
Composite Average	365	-09	542

Prices are F.O.B. mill, excluding freight



After a couple of weeks of price increases, OSB manufacturers saw a more muted tone this week. Lumber markets continue to be lethargic. SYP in particular is suffering from a lack of pull through as weather in South Texas has mucked things up. SPF is lackluster even after a number of supply curtailments have been announced by the Canadian mills. We are getting closer to a much needed three-day weekend, so think ahead for your needs!