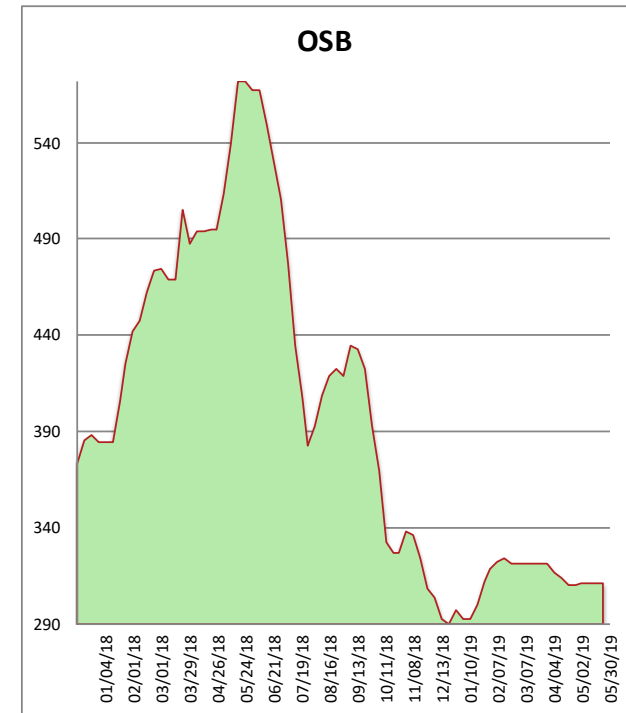
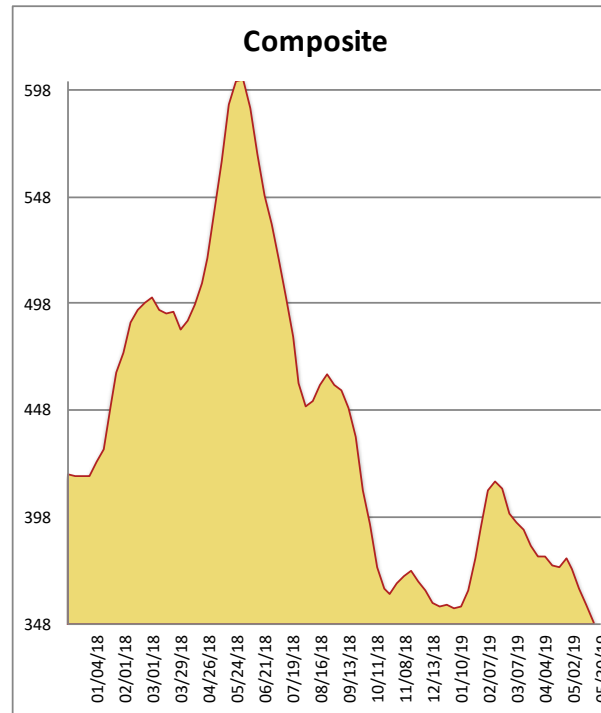


All items are priced as a general market guide. Please call our sales office for specific quotes in your respective market.

	This Week	Weekly Change	Last Year
2X4 2/BTR SYP KD	370	-11	627
2X6 2/BTR SYP KD	259	-9	556
2X8 2/BTR SYP KD	290	-13	497
2X10 2/BTR SYP KD	322	-13	519
2X12 2/BTR SYP KD	500	-7	568
2X4 104-5/8 #2/BTR SPF	380	-12	710
2X6 104-5/8 #2/BTR SPF	392	-13	703
4X8 7/16 OSB	197	0	460
4X8 23/32 OSB T&G	425	0	684
Composite Average	348	-09	592

Prices are F.O.B. mill, excluding freight



A holiday shortened week and another week of bad weather across much of the viewing area had no motivating effect on the still over supplied market. Activity levels are low and most buyers sat on the sidelines. SYP is absolutely in the tank with no foresight of change. DF and Spruce prices have continued to drift. The fire that was threatening an OSB mill in Alberta has changed direction and is no longer a threat, and has left prices flat in the West and soft elsewhere.

Get ready..we are going to go straight from a rainy spring to a 100 degree summer!