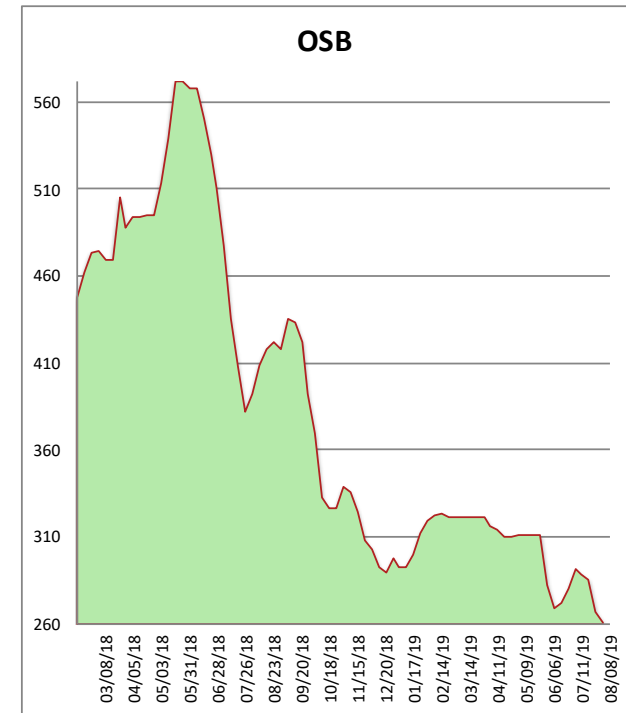
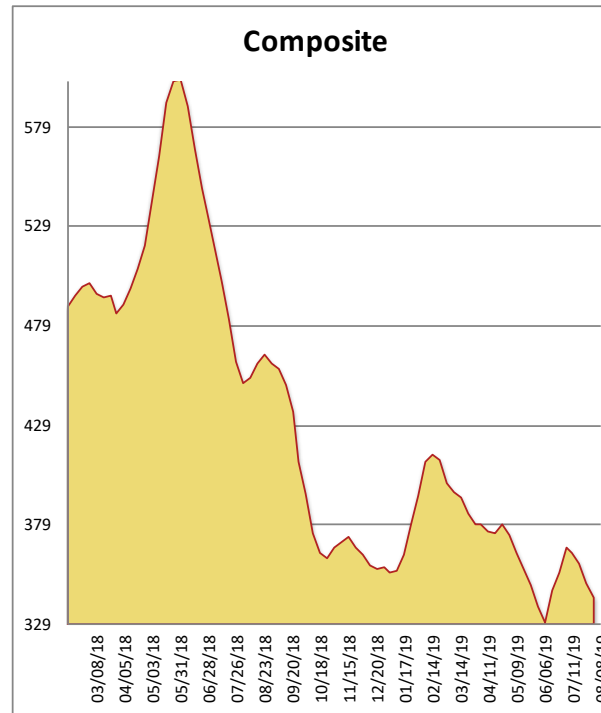


All items are priced as a general market guide. Please call our sales office for specific quotes in your respective market.

	This Week	Weekly Change	Last Year
2X4 2/BTR SYP KD	395	-7	470
2X6 2/BTR SYP KD	308	-8	448
2X8 2/BTR SYP KD	244	-11	434
2X10 2/BTR SYP KD	319	-11	515
2X12 2/BTR SYP KD	520	-18	515
2X4 104-5/8 #2/BTR SPF	382	0	560
2X6 104-5/8 #2/BTR SPF	390	0	585
4X8 7/16 OSB	156	-4	290
4X8 23/32 OSB T&G	365	-10	525
Composite Average	342	-08	482

Prices are F.O.B. mill, excluding freight



Buying activity picked up this week, especially in western species. DF and SPF saw higher prices as buyers replenished with little concern about further downside risk. In particular, 2x12 DF was in tight supply and selling at a premium. WSPF narrows saw price gains as well. OSB prices did not enjoy price appreciation as supply continues to be plentiful in most regions. Don't expect OSB to remain at these value levels for much longer.