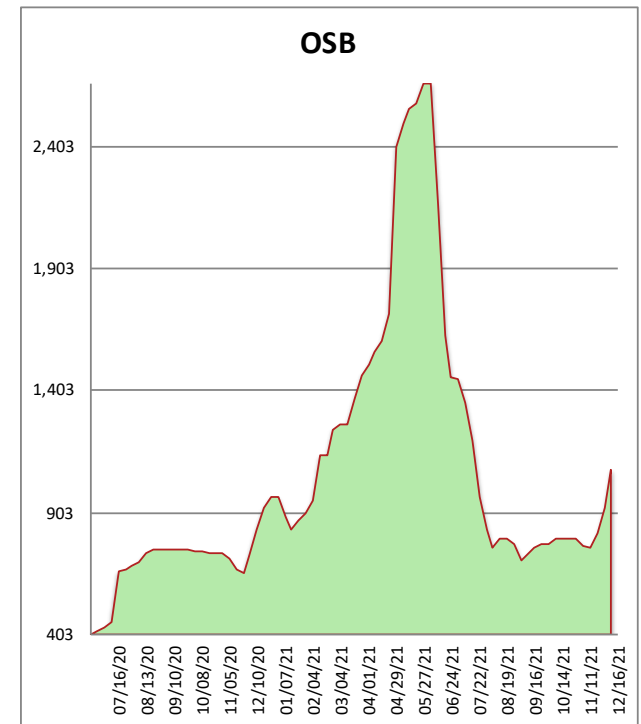
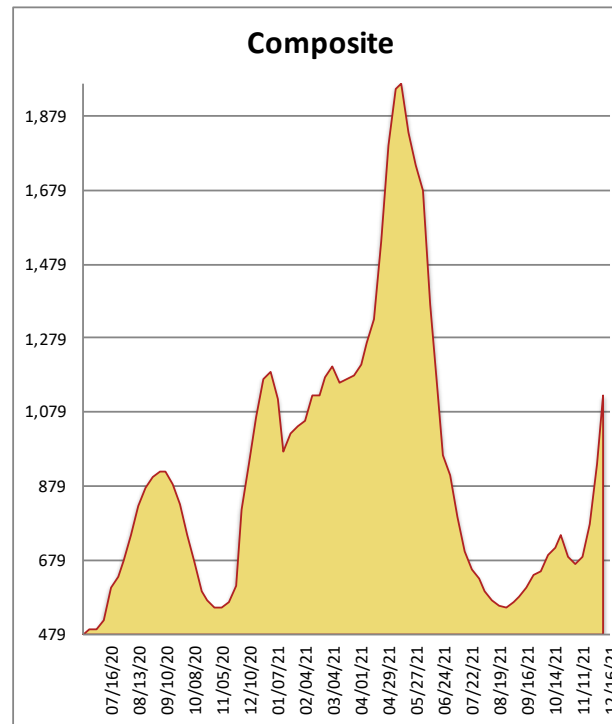


All items are priced as a general market guide. Please call our sales office for specific quotes in your respective market.

	This Week	Weekly Change	Last Year
2X4 2/BTR SYP KD	1340	240	865
2X6 2/BTR SYP KD	1250	350	730
2X8 2/BTR SYP KD	990	170	640
2X10 2/BTR SYP KD	965	160	595
2X12 2/BTR SYP KD	945	130	850
2X4 104-5/8 #2/BTR SPF	1195	175	1100
2X6 104-5/8 #2/BTR SPF	1295	170	1100
4X8 7/16 OSB	855	205	665
4X8 23/32 OSB T&G	1295	95	795
Composite Average	1,126	188	816



The good news is - we are one day closer to the top. The bad news - we probably are not really near the top. Welcome back to the 2021 Bipolar commodity market. In this weeks episode, the extreme emotion and run up kicked into yet a higher gear as rumors that there is very little wood left in the world ran rampant. When asked, trees had no comment, only fueling speculation that the rumors are true and the trees are in on it. Triple digit increases across most lumber and stud items, with panels not far behind. I'd say more, but my battery operated keyboard is about to die and a new one I'm told is four months out. Surely things will stabilize in 2022, right?