



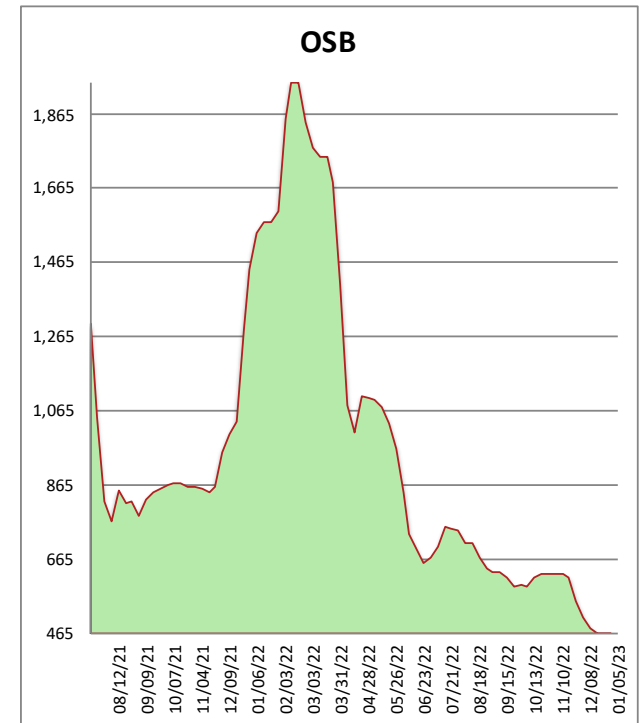
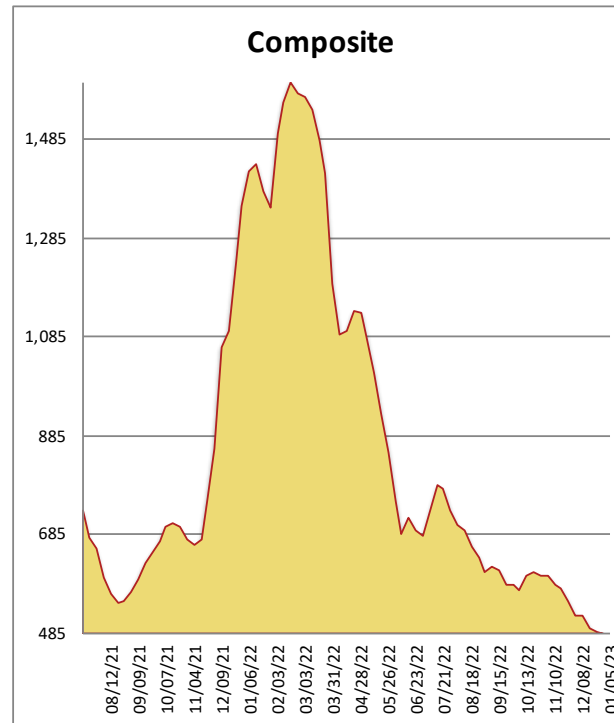
1-800-231-2310

# Midwest Framing Lumber Brief

01/05/23

All items are priced as a general market guide. Please call our sales office for specific quotes in your respective market.

	This Week	Weekly Change	Last Year
2X4 #3 SPF KD	405	0	1100
2X6 2/BTR SYP KD	485	-15	1495
2X10 2/BTR SYP KD	485	-5	1360
2X12 2/BTR SYP KD	500	-5	1385
2X4 92-5/8 2/BTR SPF KD	405	0	1160
2X4 104-5/8 2/BTR SPF KD	490	0	1300
2X6 104-5/8 2/BTR SPF KD	670	-10	1435
4X8 7/16 OSB	300	0	1210
4X8 23/32 OSB T&G	630	0	1688
Composite Average	486	-04	1,348



The tone of the market remained muted during the short first week of the year. Winter weather across the Midwest and Northeast added to the slower pace, and storms hitting California will slow the pace there as well. Canfor announced a prolonging of their ongoing SPF curtailment, but it garnered little interest or concern. Chatter about the next Fed rate increase continues as single-family construction looks significantly weaker than at this point. For now, there seems to be no incentive to build inventory, and so onward we trudge.