



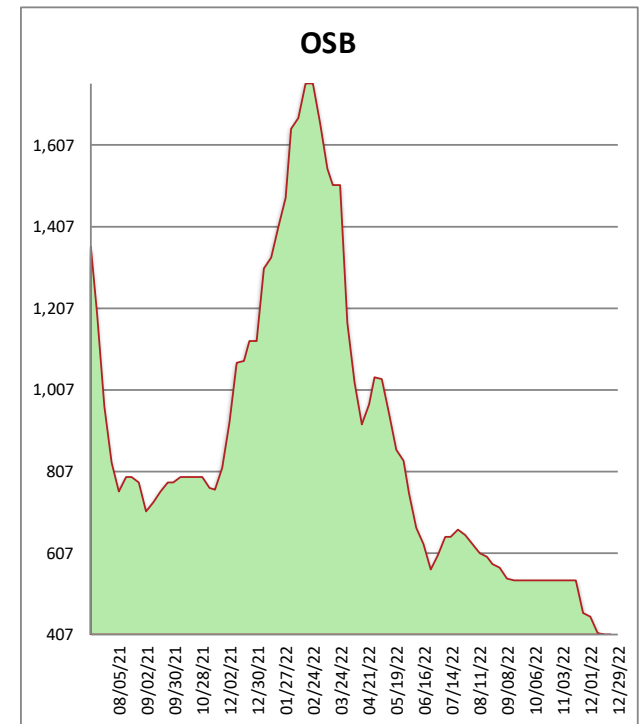
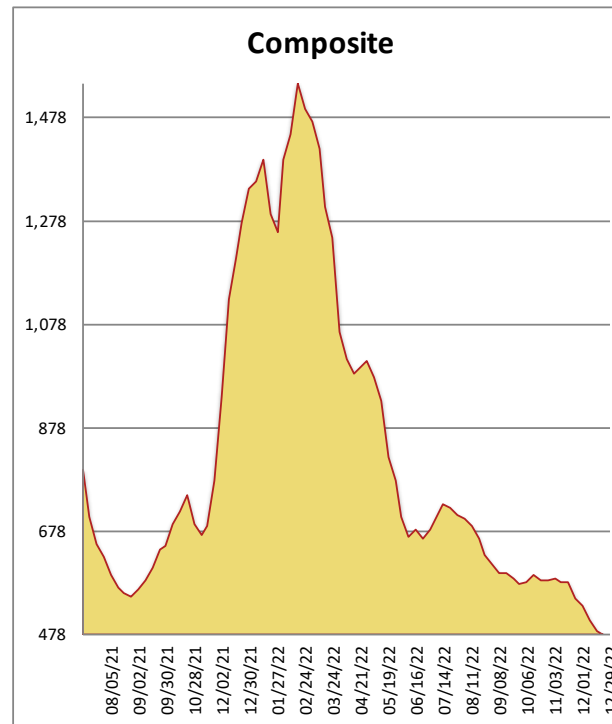
1-800-231-2310

Southeast Framing Lumber Brief

All items are priced as a general market guide. Please call our sales office for specific quotes in your respective market.

12/29/22

	This Week	Weekly Change	Last Year
2X4 2/BTR SYP KD	430	-10	1450
2X6 2/BTR SYP KD	460	-5	1350
2X8 2/BTR SYP KD	400	-10	1240
2X10 2/BTR SYP KD	500	-10	1270
2X12 2/BTR SYP KD	470	-5	1270
2X4 104-5/8 2/BTR SPF	500	-5	1280
2X6 104-5/8 2/BTR SPF	735	-10	1350
4X8 7/16 OSB	250	0	900
4X8 23/32 OSB T&G	565	0	1350
Composite Average	479	-06	1,273



Markets shifted into "P" in the week between the Christmas and New Years holidays. Buyers feel little concern that things will change much in Q1/2023. As we look back a year, it's amazing the difference. Entering 2022 the market was on a tear because of weather related transportation issues, but entering 2023 there is little energy in the commodity markets. We have exited the most volatile markets any of us will likely see in our lives. Only substantial curtailments or a reversal of interest rates are likely to generate a turnaround, but if we have learned anything it's to expect the unexpected. Be safe this weekend as you usher out '22 and greet 2023.