



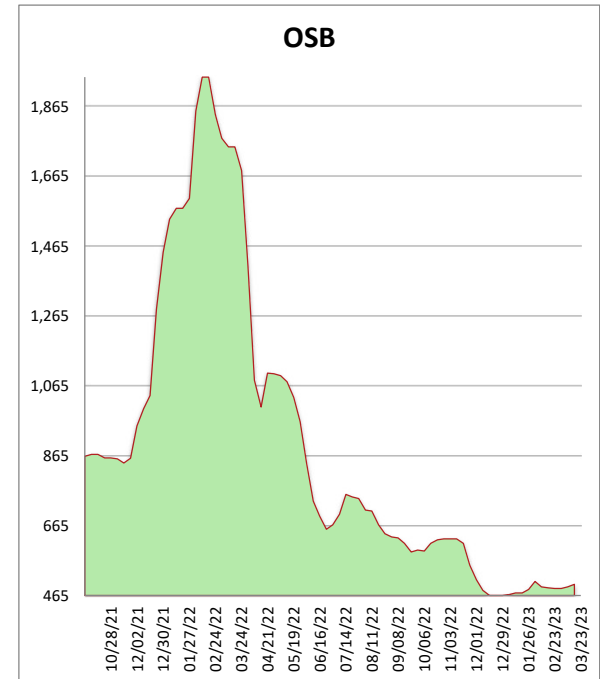
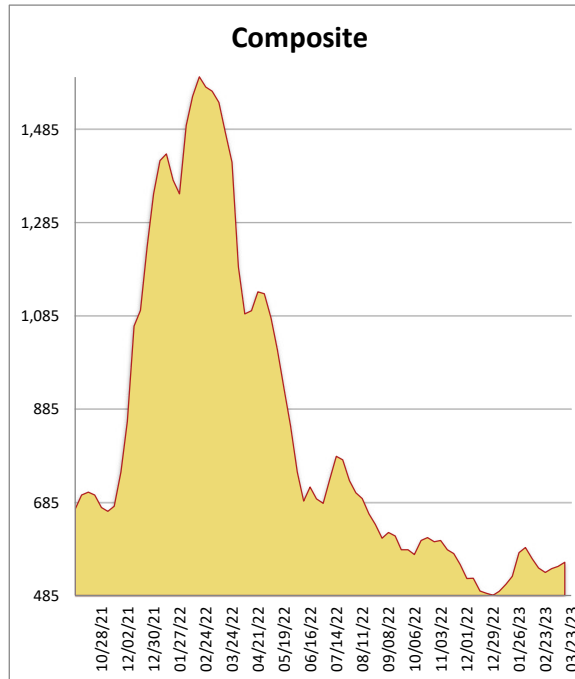
1-800-231-2310

Midwest Framing Lumber Brief

03/23/23

All items are priced as a general market guide. Please call our sales office for specific quotes in your respective market.

	This Week	Weekly Change	Last Year
2X4 #3 SPF KD	420	-10	1260
2X6 2/BTR SYP KD	530	5	1205
2X10 2/BTR SYP KD	490	-5	1240
2X12 2/BTR SYP KD	765	45	1815
2X4 92-5/8 2/BTR SPF KD	505	0	1525
2X4 104-5/8 2/BTR SPF KD	535	10	1315
2X6 104-5/8 2/BTR SPF KD	770	20	1470
4X8 7/16 OSB	360	15	1550
4X8 23/32 OSB T&G	635	0	1950
Composite Average	557	09	1,481



Markets are slowly getting more activity as we inch ever so slowly toward spring. That being said, mills are feeling the bulge of inventory build and hoping that the last couple of weeks are the start of something more substantial. Reports that box store activity has been solid were commonplace across the country. Not all species stayed active, though. SYP dimension cooled, fir plywood dipped, and OSB has been poking along. Reports of looming curtailments on OSB had some speculating that an uptick may be around the corner. Not a bad time to lock down your project! We are two short weeks from the start of the Masters and Easter weekend. Sunnier days ahead!