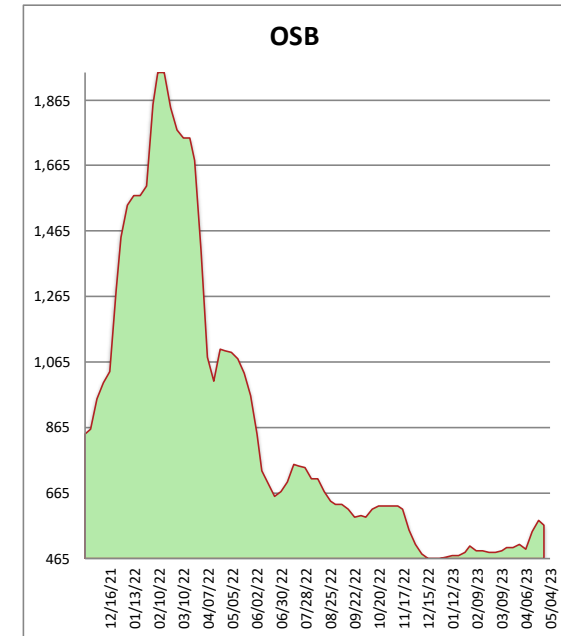
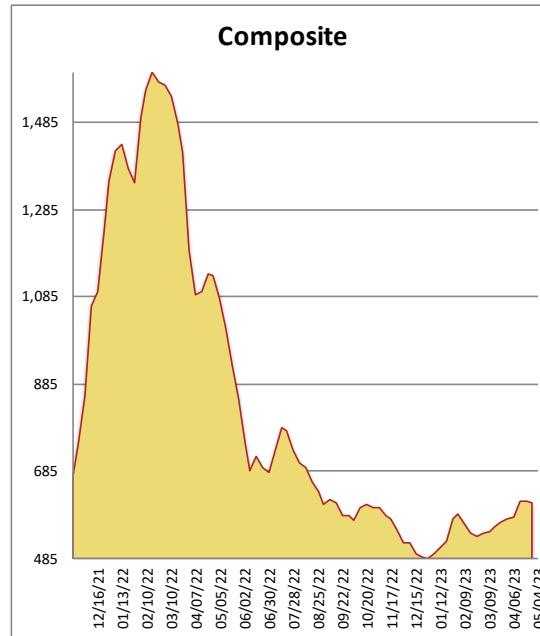


All items are priced as a general market guide. Please call our sales office for specific quotes in your respective market.

	This Week	Weekly Change	Last Year
2X4 #3 SPF KD	475	15	1160
2X6 2/BTR SYP KD	515	-30	825
2X10 2/BTR SYP KD	490	-10	745
2X12 2/BTR SYP KD	1055	30	1370
2X4 92-5/8 2/BTR SPF KD	545	20	1335
2X4 104-5/8 2/BTR SPF KD	545	-25	1210
2X6 104-5/8 2/BTR SPF KD	775	5	1355
4X8 7/16 OSB	470	20	890
4X8 23/32 OSB T&G	660	-50	1310
Composite Average	614	-03	1,133



New week, same story. GDF narrows are flat while the wides continue to fall. 2x10 and 2x12 are off double digits. Dry DF was active with discounts given. SYP in the south continues to be stable with a small downturn and is readily available except for 2x12. OSB pricing continues to climb upward and southern board is now 3 weeks out to deliver due to mill curtailments and typical spring trucking issues. SPF pricing gave up some ground although 2x6 9's continue to sell at a premium. Spring is finally here! Enjoy the sunny days, maybe some golf and of course the NBA playoffs.