



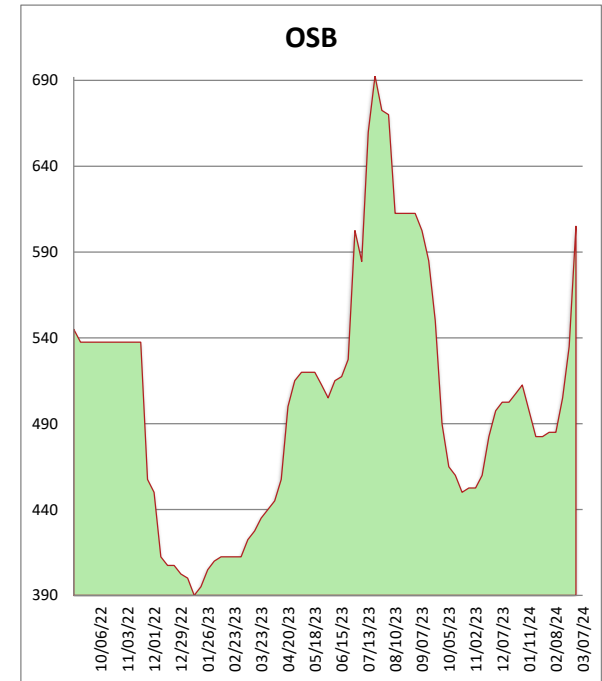
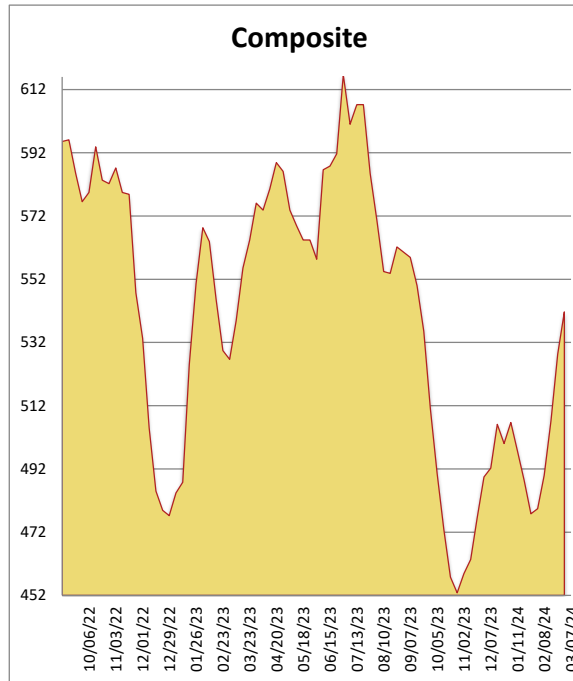
1-800-231-2310

## Southeast Framing Lumber Brief

03/07/24

All items are priced as a general market guide. Please call our sales office for specific quotes in your respective market.

	This Week	Weekly Change	Last Year
2X4 2/BTR SYP KD	470	-20	580
2X6 2/BTR SYP KD	440	-20	490
2X8 2/BTR SYP KD	455	15	440
2X10 2/BTR SYP KD	405	-15	510
2X12 2/BTR SYP KD	625	-15	695
2X4 104-5/8 2/BTR SPF	620	15	550
2X6 104-5/8 2/BTR SPF	650	20	820
4X8 7/16 OSB	540	110	255
4X8 23/32 OSB T&G	670	30	570
Composite Average	542	13	546



Demand outstripped supplies as the week progressed in most items and species. Market strength was glaring by mid-week with folks on the side-lines suddenly looking at double digit price increases week over week. Studs remain hot, with 2x6 104's leading the charge. DF/HF/SPF studs/plate were the headliners with all three having their strongest increases in months. OSB supply remains very tight with very few open market offerings. PLY/GRN DF/SYP haven't had quite as much activity, but look poised to bounce as better weather appears to be on the horizon in a lot of major markets. They call it March Madness for a reason....saddle up and strap on the spurs.