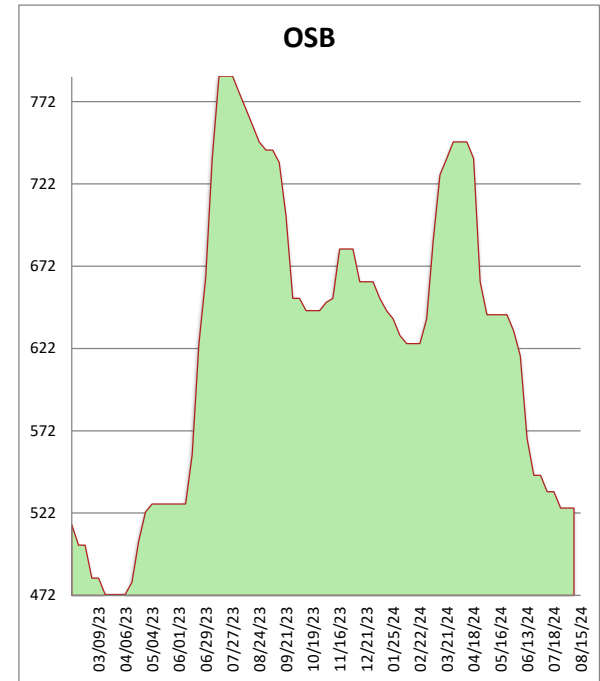
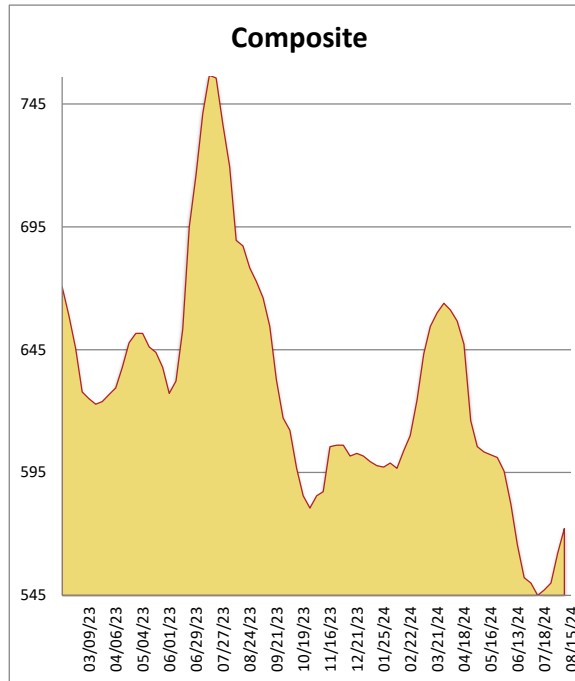


**Rocky Mountain Framing Lumber Brief**

**08/15/24**

All items are priced as a general market guide. Please call our sales office for specific quotes in your respective market.

	This Week	Weekly Change	Last Year
2X4 2/BTR KD DF/L	600	15	745
2X6 2/BTR KD DF/L	615	30	730
2X10 2/BTR KD DF/L	685	10	845
2X12 2/BTR KD DF/L	710	15	920
2X4 92-5/8 KD DF/L	465	10	570
2X4 104-5/8 KD DF/L	490	5	665
2X6 104-5/8 KD DF/L	535	5	750
4X8 7/16 OSB	410	0	650
4X8 23/32 OSB T&G	640	0	925
Composite Average	572	10	756



The market had mixed reviews this week as the slow simmer out West turned into a flame with DF GRN and Dry pushing up double digits. 2x6 and 2x12 saw the most action with most mills OTM and what was quoted was at a substantial premium to the last several months. SPF out East saw a similar run, not quite the pace as out West, but a run none the less and is up double digits on most dimensional lines. Pine in South garnered much less attention as they dried out from the wet weather LW and activity stayed muted. With that said specified 14s and 16s are carrying a large premium to 12s so be careful as you quote. OSB remains on solid footing as most mills continue to quote at last weeks levels...Northern or Southern. FIR plywood out West is status quo with little movement either way. Pine plywood on the other hand has been steadily moving upward and that trend continued this week with double digit increases across the board....NFL pre-season week 2 Eagles v the Belichickless Patriots tonight. Be curious to see how they hold up