



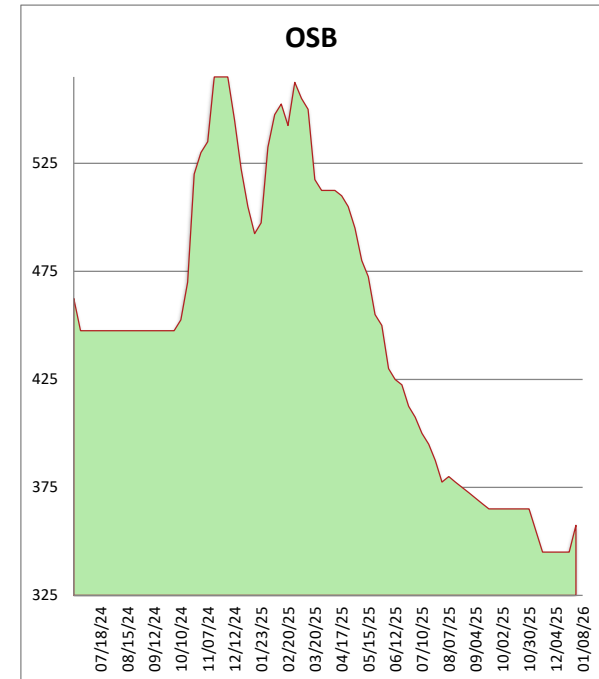
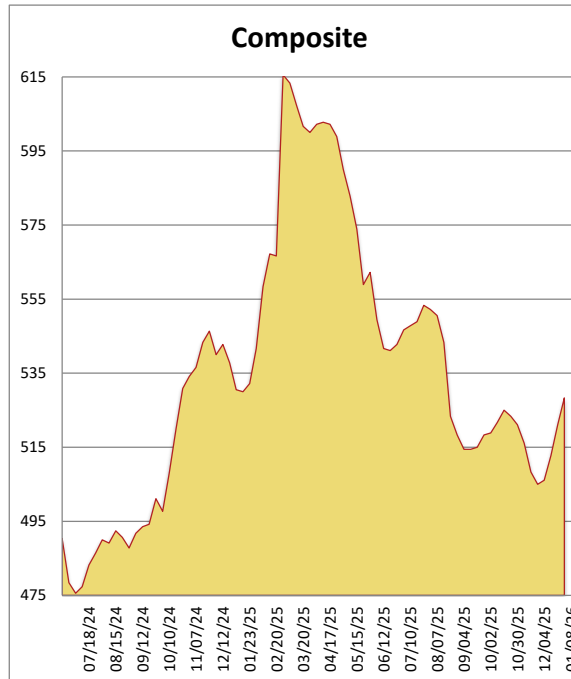
1-800-231-2310

Midwest Framing Lumber Brief

01/08/26

All items are priced as a general market guide. Please call our sales office for specific quotes in your respective market.

	This Week	Weekly Change	Last Year
2X4 #3 SPF KD	480	0	545
2X6 2/BTR SYP KD	530	25	500
2X10 2/BTR SYP KD	450	10	400
2X12 2/BTR SYP KD	545	5	505
2X4 92-5/8 2/BTR SPF KD	645	0	545
2X4 104-5/8 2/BTR SPF KD	670	0	585
2X6 104-5/8 2/BTR SPF KD	720	0	650
4X8 7/16 OSB	255	5	475
4X8 23/32 OSB T&G	460	20	655
Composite Average	528	07	540



Welcome to 2026, the first full week of trading. As buyers stepped back into the marketplace most found prices on an upward trajectory with the mills firmly in the driver's seat. Holiday shutdowns and mill curtailments created a lack of supply over the past 2-3 weeks; a lot of core items nationally have sustained AND gained momentum as the week progressed. In the South, SYP has pushed up on many items to levels not seen in almost a full year. In the West, GRN and DRY DF continue grinding up with 9' studs being the standout. OSB has remained somewhat muted with thin panel up slightly, while flooring has pushed up substantially. This is a confusing market to say the least, as buyers and sellers struggle to gain the upper hand week to week. Until rates drop and housing starts increase expect to see mills continue to reduce production as best they can to keep the ball on their side of the field....speaking of... Playoff Football for the next 5 days. Quite possibly the best weekend of the year for football fans, kicking off with The Kiffinless Rebels lining up against The U in Glendale.